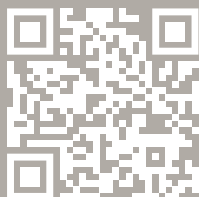


the
zenith
surfaces
collection



www.stoneambassador.com.au



Vitrified Compact Surfaces

Forward thinking, environmentally conscious design

Zenith Surfaces emerges as a paradigm shift in surface materials, leveraging a ground-breaking Vitrified Compact Surface (VCS) technology. An advanced manufacturing process helping Zenith Surfaces transcend conventional limitations, boasting exceptional strength, durability, scratch resistance, and heat resistance.

Containing up to 89% recycled materials

Using a unique recycled glass make-up and featuring up to 89% recycled materials, Zenith Surfaces is transforming design with a purpose. Helping to minimise environmental impact and promoting resource conservation at the same time.

Offering exceptional performance and strength

Zenith Surfaces exhibits excellent compressive and flexural strength, exceeding granite and marble benchmarks. Its resistance to scratches and stains simplifies maintenance, while its impressive thermal resistance renders it highly resistant to everyday kitchen heat.



Spill Resistant

Thanks to high spill resistance technology, cleaning up those small marks and stubborn spots is a breeze with Zenith Surfaces.



Stain Resistant

A near care-free surface that doesn't require any sealing or ongoing treatments making it ideal for any internal application.



Environmentally Friendly

With recycled ingredients and a sustainable design ethos, Zenith Surfaces truly is a decorative material with purpose.



Heat Resistant

High heat resistance mean Zenith Surfaces is ideal for internal applications like benchtops, Splashbacks and higher heat areas.



Scratch Resistant

Unlike its natural counterparts, Zenith Surfaces contains impressive scratch resistant properties, perfect for whatever life can throw at it.



10 Year Warranty

Covered by our ten year warranty, you can rest assured that your Zenith Surfaces product will remain beautiful for many years to come.

Up to 89%
Recycled
Materials



10 Year
Warranty
Included



0%
Crystalline
Silica





we're redefining decorative surfaces
with a sustainable design focus



Product Range



Le Taj
3200mm X 1600mm x 20mm

Signature



Naica
3200mm X 1600mm x 20mm



Le Blanc

3200mm X 1600mm x 20mm



Suave

3200mm X 1600mm x 20mm

Premium



Rosé

3200mm X 1600mm x 20mm

Prestige



Le Blanc

3200mm X 1600mm x 20mm

Prestige



Naica

3200mm X 1600mm x 20mm

Prestige



Dulce de Leche

3200mm X 1600mm x 20mm

Signature



Nimbus Grey

3200mm X 1600mm x 20mm

Signature



Alpine Drift
3200mm X 1600mm x 20mm

Signature



Le Taj
3200mm X 1600mm x 20mm

Signature



Nimbus Grey

3200mm X 1600mm x 20mm



Rosé

3200mm X 1600mm x 20mm

Slab Specifications

Slab Thickness: 20mm | Slab Dimension: 3200mm x 1600mm

Slab Finishes

(All slabs polished unless stated otherwise.)

M: Matte | T: Textured | PM: Pattern Match



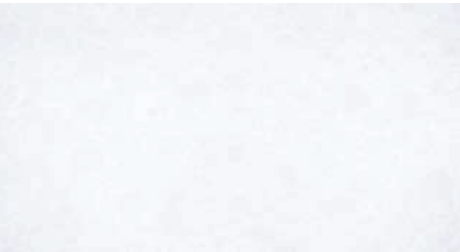
Sugar Rush

Essential



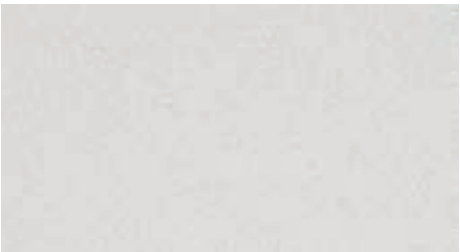
Sparkling White

Essential



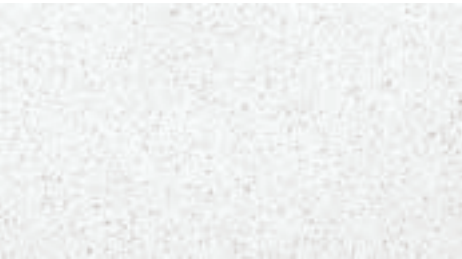
White Truffle

Deluxe



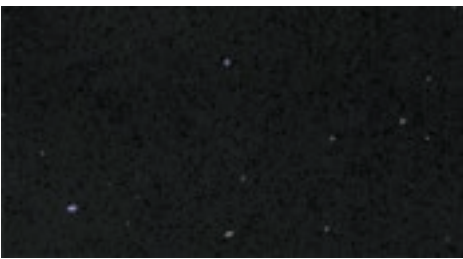
Mero

Deluxe



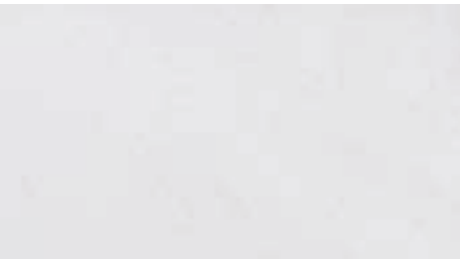
Dapple White

Essential



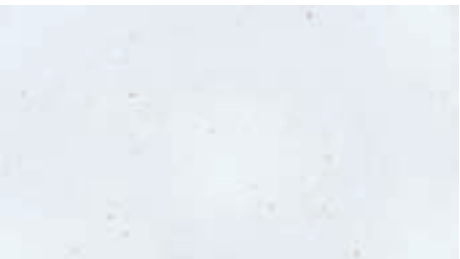
Platinum Black

Essential



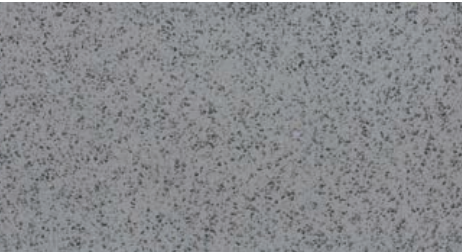
Terazio

Deluxe



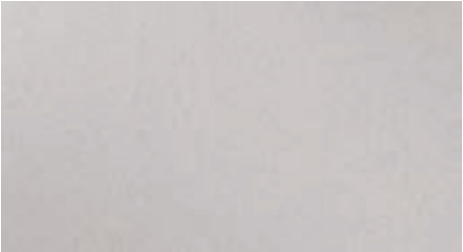
Kirec M

Deluxe



Mottle Grey

Essential



Savannah

Essential



Beton M

Deluxe



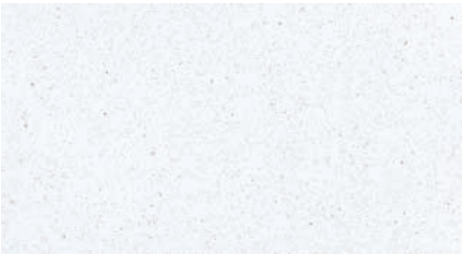
Carrara Mist

Premium



White Burst

Essential



Crystal

Essential



Lagos Grey

Premium



Casablanca

Premium



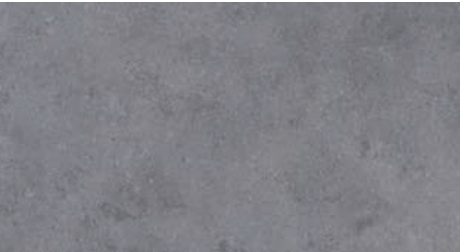
Pearl White

Deluxe



Mink Grey

Deluxe



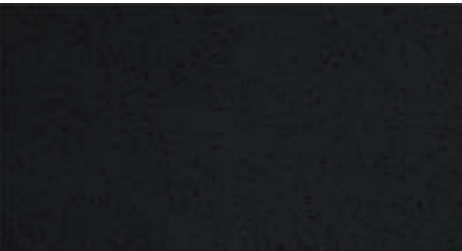
Graphene

Premium



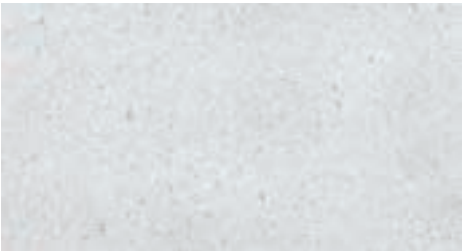
Marrakesh

Premium



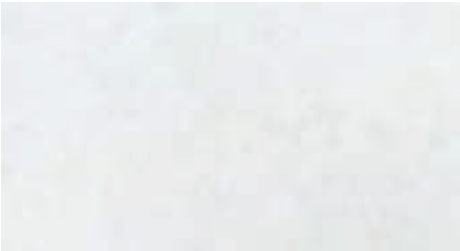
Carbon Noir

Deluxe



Fossil

Deluxe



Firtina T

Premium



Valour T

Premium

Slab Specifications

Slab Thickness: 20mm | Slab Dimension: 3200mm x 1600mm

Slab Finishes (All slabs polished unless stated otherwise.)

M: Matte | T: Textured | PM: Pattern Match



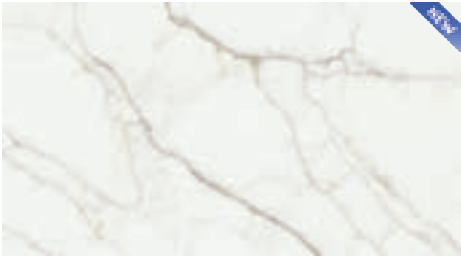
Element Grey T Premium



Suave Premium



Le Blanc Prestige



Naica Prestige



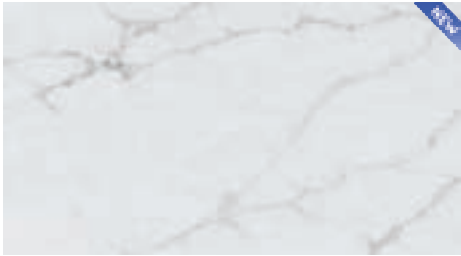
Marbella Prestige



Raiden Prestige



Dulce de Leche Signature



Nimbus Grey Signature



Vanilla Sky Prestige



Whisper White Prestige



Le Taj Signature



Alpine Drift Signature



Allure Blue Prestige



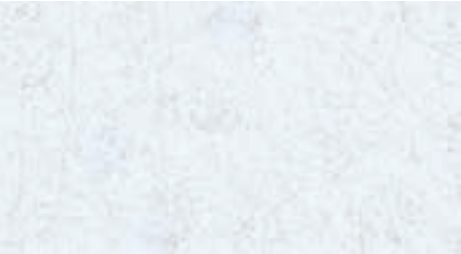
Greylac Prestige



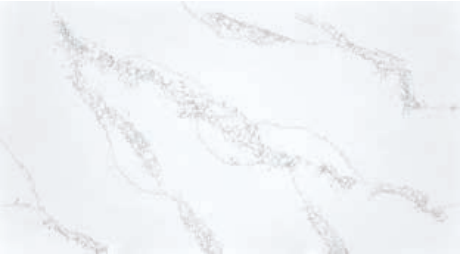
Elysian White Signature



Zayan PM Signature



Enchanted White T Prestige



Calacatta Signature PM Prestige



Bluetta Signature



Gracious Grey Signature



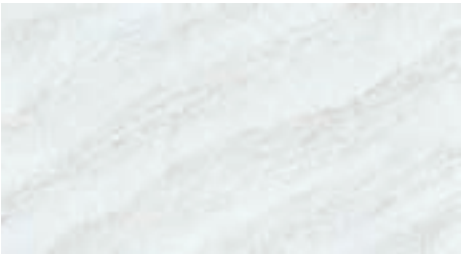
Ottoman Grey Prestige



Rosé Prestige



Bescato Bianco Signature



Perla Venata Signature



Premium

Suave
3200mm X 1600mm x 20mm




Dulce de Leche


3200mm X 1600mm x 20mm

Luxury Surface Architecture


Helping Aussies create the space they have always wanted since 2012.




Easy Clean Surfaces




Durable Designs




Heat Resistance




Spill Resistance




Scratch Resistance



Australian Owned



Jumbo Sizing



Recycled Materials

Hard Wearing, Durable Designs.

All of our surfaces are designed to be durable and suitable for a range of internal applications such as kitchens, bathrooms splashbacks and covered alfresco dining areas for you peace of mind.

Easy Clean Surfaces.

Zenith Surfaces designs are made for easy cleaning with nothing more than warm soapy water and a simple microfiber cloth. For those more stubborn marks, try our dedicated cleaning solutions.

Thousands of Happy Homes

Stone Ambassador products have made their way into tens of thousands of homes all over Australia and we invite you to be the next happiness story. Our friendly staff are experts in all things surfaces and can't wait to help bring your project dreams to life.


The Zenith Surfaces Collection

Beautiful and sustainable surfaces for any space you can imagine


Essential	Deluxe	Premium	Prestige		Signature
Sugar Rush	Pearl White	Carrara Mist	Ottoman Grey	Rosé (New)	Elysian White
Sparkling White	Mink Grey	Lagos Grey	Calacatta Signature	Le Blanc (New)	Zayan
Dapple White	Carbon Noir	Casablanca	Marbella	Naica (New)	Bluetta
Platinum Black	Fossil	Graphene	Raiden		Gracious Grey
Mottle Grey	White Truffle	Marrakesh	Vanilla Sky		Bescato Bianco
Savannah	Mero	Firtina (T)	Whisper White		Perla Venata
White Burst	Terazio	Valour (T)	Allure Blue		Dulce de Leche (New)
Crystal	Kirec (M)	Element Grey (T)	Greylac		Nimbus Grey (New)
	Beton (M)	Suave (New)	Enchanted White (T)		Le Taj (New)
					Alpine Drift (New)

Popular Edge Profile Styles

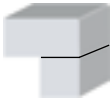
Ask our helpful team about your ideal edge profile type



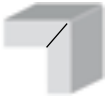
20mm Arris



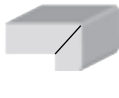
20mm Pencil Round



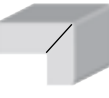
20mm stone with mitered edge (arris). Butt joint slab end panel



20mm stone (arris). Miter joint slab end panel



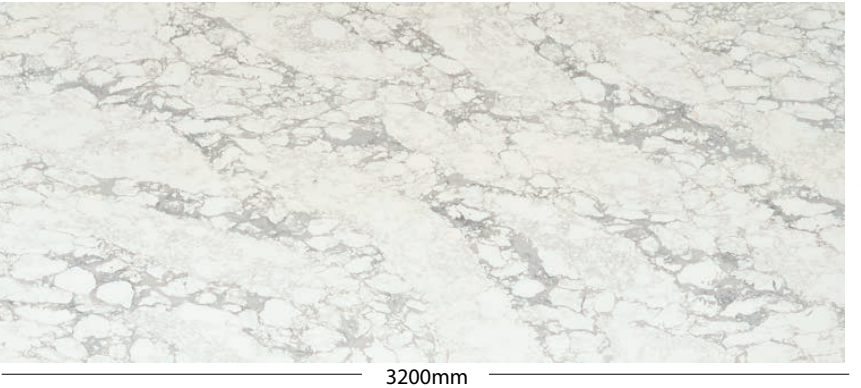
20mm stone with 40mm mitered edge (arris)



20mm stone with 60mm mitered edge (arris)

Zenith Surfaces Slab Sizing

Jumbo slab sizing to maximise your material usage



For more information, refer to the Stone Ambassador website - www.stoneambassador.com.au



10 Year Peace of Mind Warranty

Unlike natural marble, Zenith Surfaces does not require sealing or regular maintenance, making it a practical, durable and affordable solution for your home or project. Zenith Surfaces is not indestructible, but it is tough - with high durability against heat, scratching, chips and stains all Zenith Surfaces products come with our 10 year peace of mind warranty.

Care & Maintenance

Receiving your complimentary cleaning and care kit

Zenith Surfaces requires minimal maintenance to keep your surface looking as good as new. When you register your Zenith Surfaces product within 30 days, you will receive your complimentary cleaning and care kit. Using the contents contained within on a regular basis will help ensure the long lasting life of your Zenith Surfaces product.

How to care for your benchtop

Everyday polished and matte bench-top cleaning requires no more than soapy water and a clean microfiber cloth.

To manage those stubborn marks or spills on polished bench-tops, do the following:

- With the contents of your care and maintenance box, wet and wash your microfiber cloth, ensuring it is clean and free of any debris.
- Place a small, twenty cent piece size drop of cream cleanser on your benchtop and wipe in small circular motions with your microfiber cloth and create a lather.
- Avoid heavy rubbing in the same area to prevent any etch or scuff marks appearing.
- Once the area is clean, wipe excess cleanser away with a wet and clean microfiber cloth or paper towel.

Cleaning your Zenith Surfaces matte or textured surfaces

- Clean using a non-scratch scouring pad and your included cream cleanser
- Wipe in a circular motion, avoiding any excess pressure.
- Wipe dry with a clean microfiber cloth.

General tips for using your Zenith Surfaces bench-tops

- Always use a chopping board when chopping food to avoid any unwanted scratches.
- If your pots and pans are too hot to touch, they are too hot for your bench-top. Always use heat trivets or chopping boards to place any hot items directly on your bench-top surface.



Clean & damp Microfiber cloth



Wet the area to be cleaned



Apply 20c size drop of cleanser



Wipe in gentle circular motions



Wipe away any excess cleanser



Cleaning Video

Visit Your Local Stone Ambassador Showroom

We can help guide you to creating a space you will love for a lifetime



Victoria North (Head Office)

31 Burnett Street, Somerton, 3062
(03) 9333 8835

Victoria South

70-72 Nissan Drive, Dandenong South, 3175
(03) 9333 8834

Queensland

35 Telford Circuit, Yatala, 4207
(07) 3462 8500

South Australia

1 Johansson Road, Wingfield, 5013
(08) 8423 0150

Western Australia

24 Creative Street, Wangara, 6065
(08) 6383 6558

New South Wales

13 Enterprise Circuit, Prestons, 2170
(02) 8124 8116