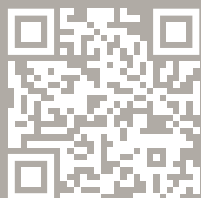


the  
zenith  
surfaces  
collection



[www.stoneambassador.com.au](http://www.stoneambassador.com.au)



Vitrified Compact Surfaces

# Forward thinking, environmentally conscious design

Zenith Surfaces emerges as a paradigm shift in surface materials, leveraging a ground-breaking Vitriified Compact Surface (VCS) technology. An advanced manufacturing process helping Zenith Surfaces transcend conventional limitations, boasting exceptional strength, durability, scratch resistance, and heat resistance.

## Containing up to 89% recycled materials

Using a unique recycled glass make-up and featuring up to 89% recycled materials, Zenith Surfaces is transforming design with a purpose. Helping to minimise environmental impact and promoting resource conservation at the same time.

## Offering exceptional performance and strength

Zenith Surfaces exhibits excellent compressive and flexural strength, exceeding granite and marble benchmarks. Its resistance to scratches and stains simplifies maintenance, while its impressive thermal resistance renders it highly resistant to everyday kitchen heat.



### Spill Resistant

Thanks to high spill resistance technology, cleaning up those small marks and stubborn spots is a breeze with Zenith Surfaces.



### Stain Resistant

A near care-free surface that doesn't require any sealing or ongoing treatments making it ideal for any internal application.



### Environmentally Friendly

With recycled ingredients and a sustainable design ethos, Zenith Surfaces truly is a decorative material with purpose.



### Heat Resistant

High heat resistance mean Zenith Surfaces is ideal for internal applications like benchtops, splashbacks and higher heat areas.



### Scratch Resistant

Unlike its natural counterparts, Zenith Surfaces contains impressive scratch resistant properties, perfect for whatever life can throw at it.



### 10 Year Warranty

Covered by our ten year warranty, you can rest assured that your Zenith Surfaces product will remain beautiful for many years to come.

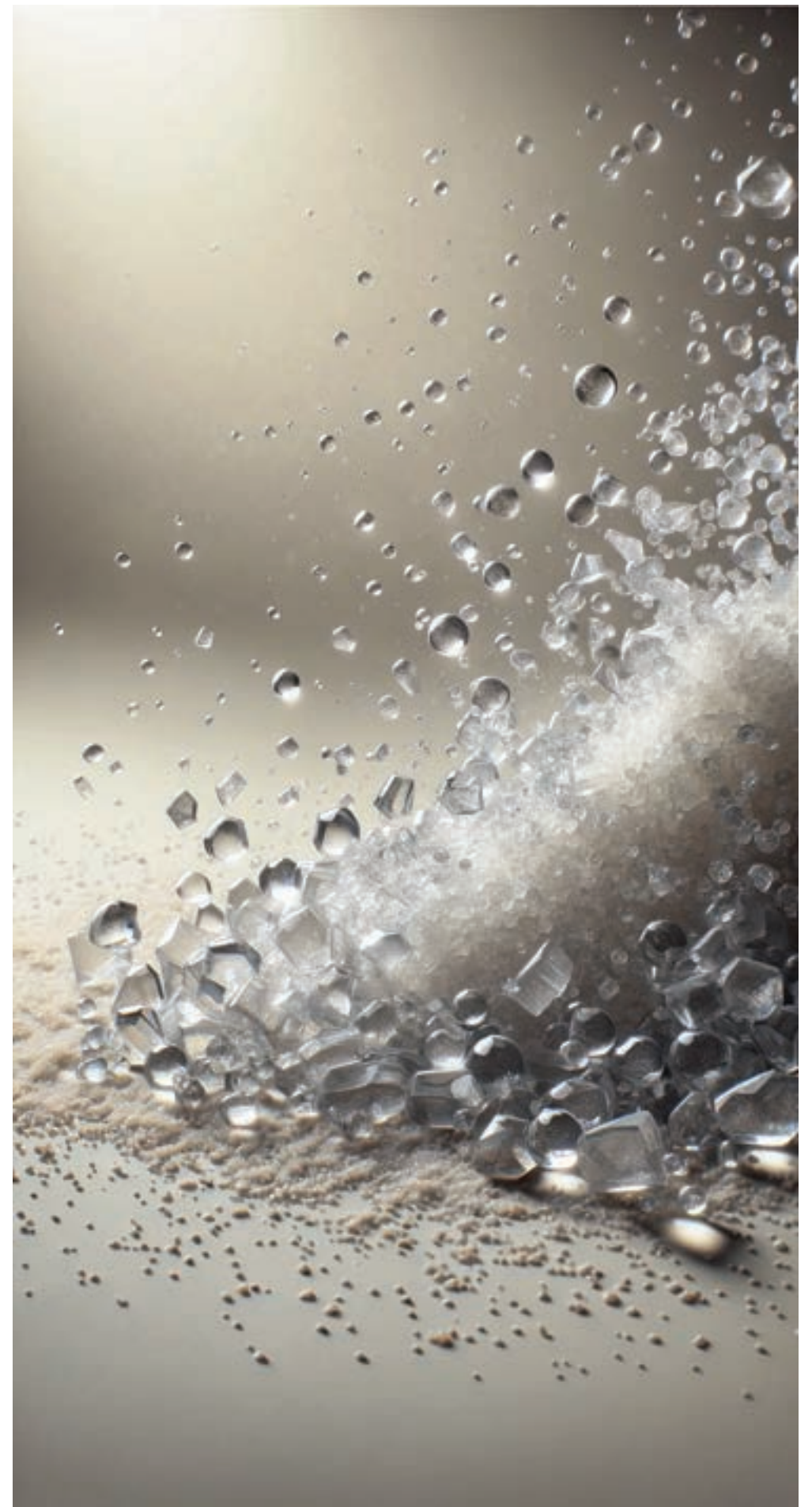
Up to 89%  
Recycled  
Materials



10 Year  
Warranty  
Included



0%  
Crystalline  
Silica





Premium

**Graphene**

3200mm X 1600mm x 20mm



**Bescato Bianco**

3200mm X 1600mm x 20mm



**Allure Blue**

3200mm X 1600mm x 20mm



**Mink Grey**

3200mm X 1600mm x 20mm

Deluxe



**Carbon Noir**

3200mm X 1600mm x 20mm

Deluxe



Premium

**Graphene**

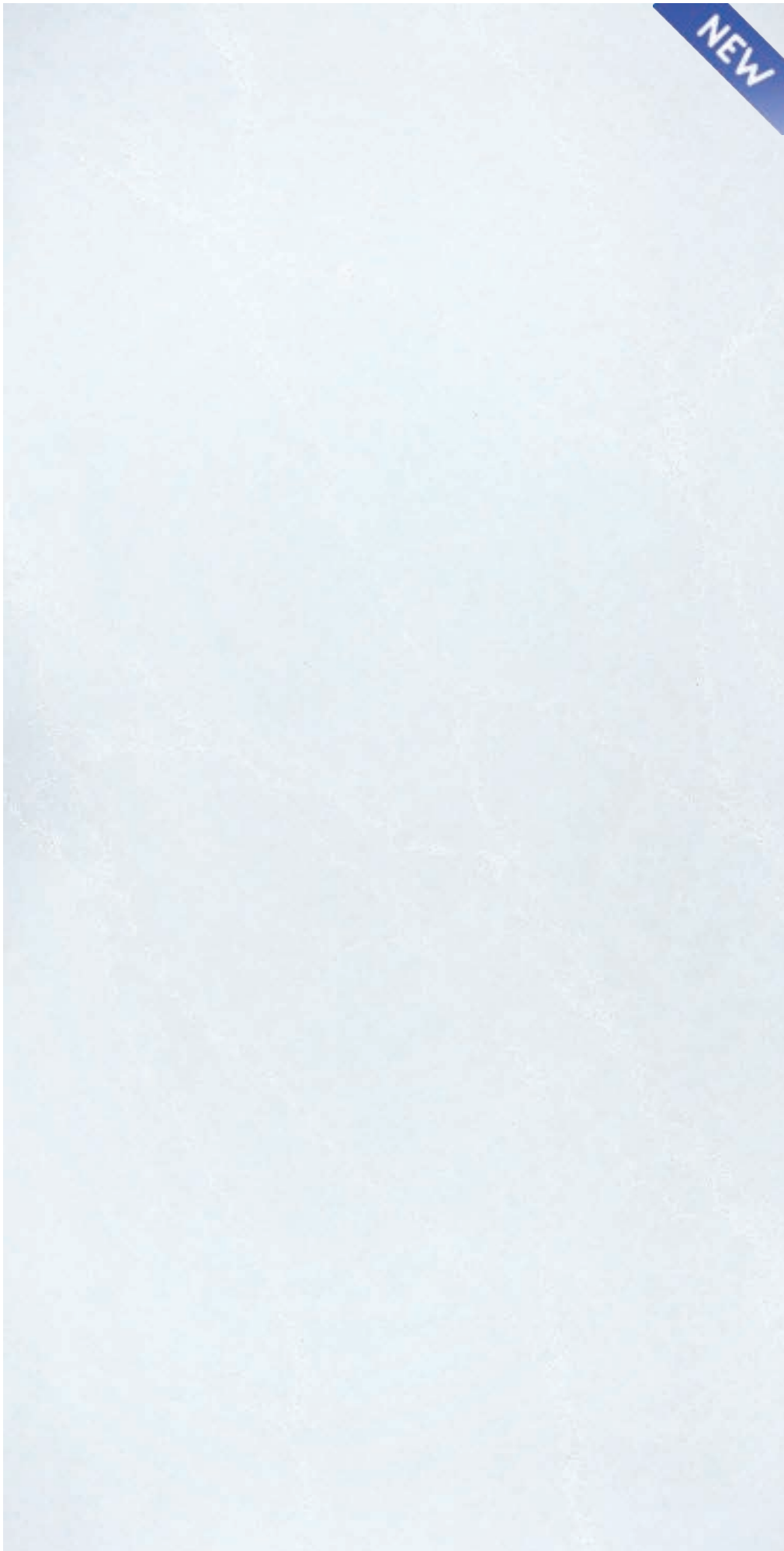
3200mm X 1600mm x 20mm



Premium

**Marrakesh**

3200mm X 1600mm x 20mm



**Vanilla Sky**

3200mm X 1600mm x 20mm

Prestige



**Allure Blue**

3200mm X 1600mm x 20mm

Prestige





**Whisper White**

3200mm X 1600mm x 20mm

Prestige



**Greylac**

3200mm X 1600mm x 20mm

Prestige



Signature

**Bescato Bianco**

3200mm X 1600mm x 20mm



Signature

**Perla Venata**

3200mm X 1600mm x 20mm



**Perla Venata**

3200mm X 1600mm x 20mm

## Slab Specifications

Slab Thickness: 20mm | Slab Dimension: 3200mm x 1600mm

## Slab Finishes

(All slabs polished unless stated otherwise.)

M: Matte | T: Textured | PM: Pattern Match



Sugar Rush

Essential



Sparkling White

Essential



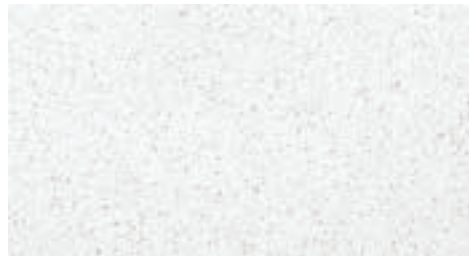
White Truffle

Deluxe



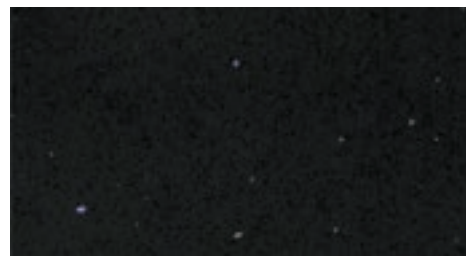
Mero

Deluxe



Dapple White

Essential



Platinum Black

Essential



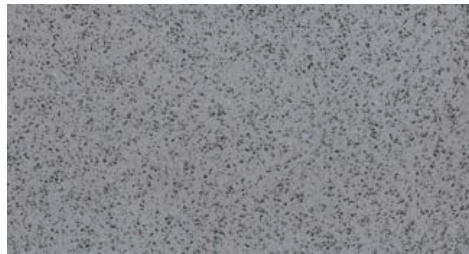
Terazio

Deluxe



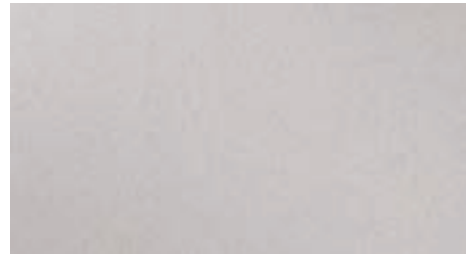
Kirec M

Deluxe



Mottle Grey

Essential



Savannah

Essential



Beton M

Deluxe



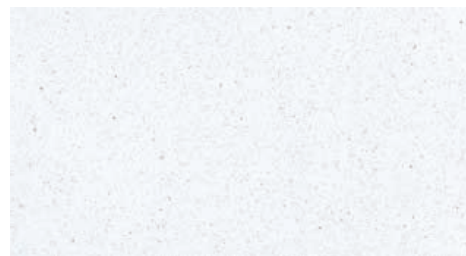
Carrara Mist

Premium



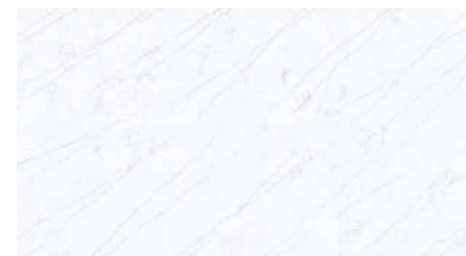
White Burst

Essential



Crystal

Essential



Lagos Grey

Premium



Casablanca

Premium



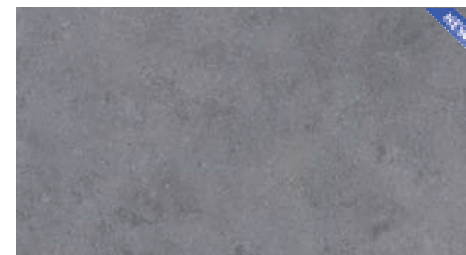
Pearl White

Deluxe



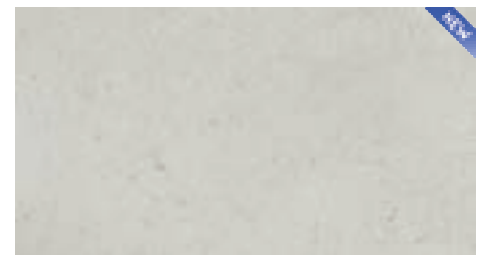
Mink Grey

Deluxe



Graphene

Premium



Marrakesh

Premium



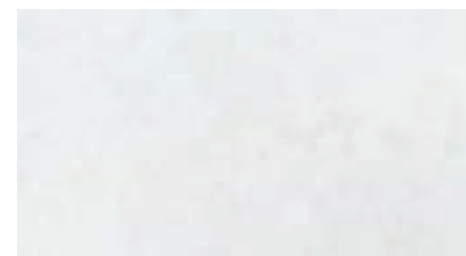
Carbon Noir

Deluxe



Fossil

Deluxe



Firtina T

Premium



Valour T

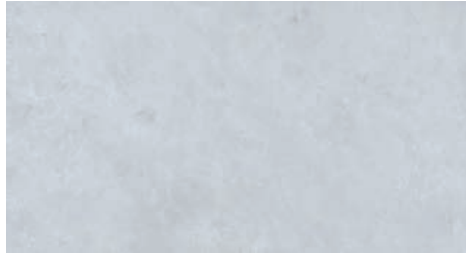
Premium

## Slab Specifications

Slab Thickness: 20mm | Slab Dimension: 3200mm x 1600mm

## Slab Finishes (All slabs polished unless stated otherwise.)

**M:** Matte | **T:** Textured | **PM:** Pattern Match



Element Grey **T** **Premium**



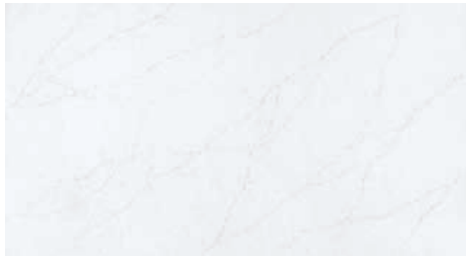
Calacatta Signature **Prestige**



Bluetta **Signature**



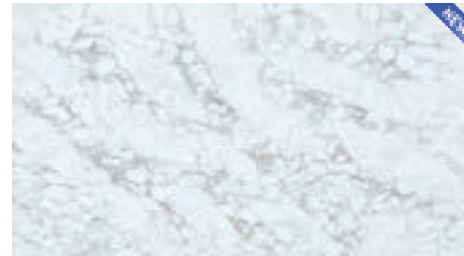
Gracious Grey **Signature**



Marbella **Prestige**



Raiden **Prestige**



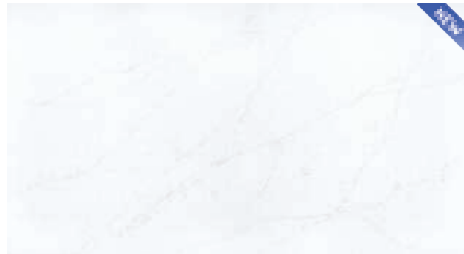
Bescato Bianco **Signature**



Perla Venata **Signature**



Vanilla Sky **Prestige**



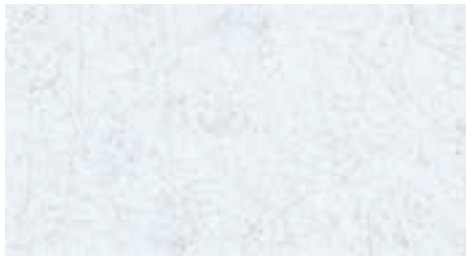
Whisper White **Prestige**



Allure Blue **Prestige**



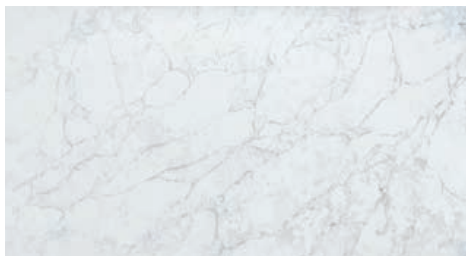
Greylac **Prestige**



Enchanted White **T** **Prestige**



Ottoman Grey **Signature**



Elysian White **Signature**



Zayan **PM** **Signature**



**Premium**

## Marrakesh

3200mm X 1600mm x 20mm



Prestige

**Vanilla Sky**

3200mm X 1600mm x 20mm



Prestige

Greylac

3200mm X 1600mm x 20mm

## Luxury Surface Architecture

Helping Aussies create the space they have always wanted since 2012.



Easy Clean Surfaces



Durable Designs



Heat Resistance



Spill Resistance



Scratch Resistance



Australian Owned



Jumbo Sizing



Recycled Materials

### Hard Wearing, Durable Designs

All of our surfaces are designed to be durable and suitable for a range of internal applications such as kitchens, bathrooms splashbacks and covered alfresco dining areas for your peace of mind.

### Easy Clean Surfaces

Zenith Surfaces designs are made for easy cleaning with nothing more than warm soapy water and a simple microfiber cloth. For those more stubborn marks, try our dedicated cleaning solutions.

### Thousands of Happy Homes

Stone Ambassador products have made their way into tens of thousands of homes all over Australia and we invite you to be the next happiness story. Our friendly staff are experts in all things surfaces and can't wait to help bring your project dreams to life.

## The Zenith Surfaces Collection

Beautiful and sustainable surfaces for any space you can imagine

Essential	Deluxe	Premium	Prestige	Signature
Sugar Rush	Pearl White	Carrara Mist	Calacatta Signature	Ottoman Grey
Sparkling White	Mink Grey <b>(New)</b>	Lagos Grey	Marbella	Elysian White
Dapple White	Carbon Noir <b>(New)</b>	Casablanca	Raiden	Zayan
Platinum Black	Fossil	Graphene <b>(New)</b>	Vanilla Sky <b>(New)</b>	Bluetta
Mottle Grey	White Truffle	Marrakesh <b>(New)</b>	Whisper White <b>(New)</b>	Gracious Grey
Savannah	Mero	Firtina (T)	Allure Blue <b>(New)</b>	Bescato Bianco <b>(New)</b>
White Burst	Terazio	Valour (T)	Greylac <b>(New)</b>	Perla Venata <b>(New)</b>
Crystal	Kirec (M)	Element Grey (T)	Enchanted White (T)	
	Beton (M)			

## Popular Edge Profile Styles

Ask our helpful team about your ideal edge profile type



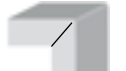
20mm Aris



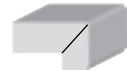
20mm Pencil Round



20mm stone with mitred edge (arris). Butt joint slab end panel



20mm stone (arris). Mitre joint slab end panel



20mm stone with 40mm mitred edge (arris)



20mm stone with 60mm mitred edge (arris)

## Zenith Surfaces Slab Sizing

Jumbo slab sizing to maximise your material usage

JUMBO SLABS



3200mm

1600mm

For more information, refer to the Stone Ambassador website - [www.stoneambassador.com.au](http://www.stoneambassador.com.au)



## 10 Year Peace of Mind Warranty

Unlike natural marble, Zenith Surfaces does not require sealing or regular maintenance, making it a practical, durable and affordable solution for your home or project. Zenith Surfaces is not indestructible, but it is tough - with high durability against heat, scratching, chips and stains all Zenith Surfaces products come with our 10 year peace of mind warranty.

## Care & Maintenance

### Receiving your complimentary cleaning and care kit

Zenith Surfaces requires minimal maintenance to keep your surface looking as good as new. When you register your Zenith Surfaces product within 30 days, you will receive your complimentary cleaning and care kit. Using the contents contained within on a regular basis will help ensure the long lasting life of your Zenith Surfaces product.

## How to care for your benchtop

Everyday polished and matte benchtop cleaning requires no more than soapy water and a clean microfiber cloth.

### To manage those stubborn marks or spills on polished benchtops, do the following:

1. With the contents of your care and maintenance box, wet and wash your microfiber cloth, ensuring it is clean and free of any debris.
2. Place a small, twenty cent piece size drop of cream cleanser on your benchtop and wipe in small circular motions with your microfiber cloth and create a lather.
3. Avoid heavy rubbing in the same area to prevent any etch or scuff marks appearing.
4. Once the area is clean, wipe excess cleanser away with a wet and clean microfiber cloth or paper towel.

### Cleaning your Zenith Surfaces matte or textured surfaces

1. Clean using a non-scratch scouring pad and your included cream cleanser
2. Wipe in a circular motion, avoiding any excess pressure.
3. Wipe dry with a clean microfiber cloth.

### General tips for using your Zenith Surfaces benchtops

1. Always use a chopping board when chopping food to avoid any unwanted scratches.
2. If your pots and pans are too hot to touch, they are too hot for your benchtop. Always use heat trivets or chopping boards to place any hot items directly on your benchtop surface.



Clean & damp Microfiber cloth



Wet the area to be cleaned



Apply 20c size drop of cleanser



Wipe in gentle circular motions



Wipe away any excess cleanser



Cleaning Video

## Visit Your Local Stone Ambassador Showroom

We can help guide you to creating a space you will love for a lifetime



### Victoria North (Head Office)

31 Burnett Street, Somerton, 3062  
(03) 9333 8835

### Victoria South

70-72 Nissan Drive, Dandenong South, 3175  
(03) 9333 8834

### Queensland

35 Telford Circuit, Yatala, 4207  
(07) 3462 8500

### South Australia

101 South Terrace, Wingfield, 5013  
(08) 8423 0150

### Western Australia

24 Creative Street, Wangara, 6065  
(08) 6383 6558